

# Ves tvoj

Aleš Traven,  
arr. Viktorija Celarc

$\text{♩} = 135$

Klavir

16

16

*p*

19

*mf*

*mf*

24

29

34

V.S.

39

Measures 39-44 of a musical score in B-flat major. The right hand features a melody with eighth and sixteenth notes, while the left hand provides a steady bass line with eighth notes. Measure 44 ends with a repeat sign.

45

Measures 45-50 of a musical score in B-flat major. The right hand continues the melodic line with some chords. Measure 50 has a first ending bracket leading to a repeat sign.

51

Measures 51-55 of a musical score in B-flat major. Measure 51 has a second ending bracket. A *mf* (mezzo-forte) dynamic marking appears above measure 54. The right hand has a more active melody in measure 55.

56

Measures 56-60 of a musical score in B-flat major. The right hand features a melodic line with some eighth-note patterns. The left hand continues with a bass line.

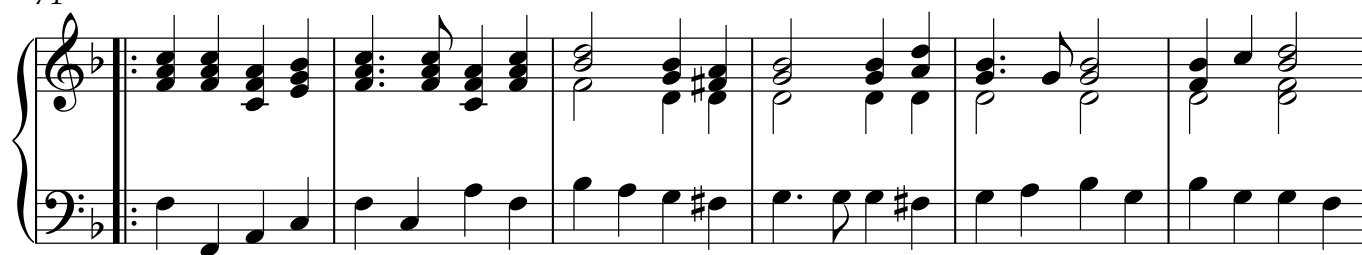
61

Measures 61-65 of a musical score in B-flat major. The right hand has a more complex melodic line with eighth and sixteenth notes. The left hand provides a supporting bass line.

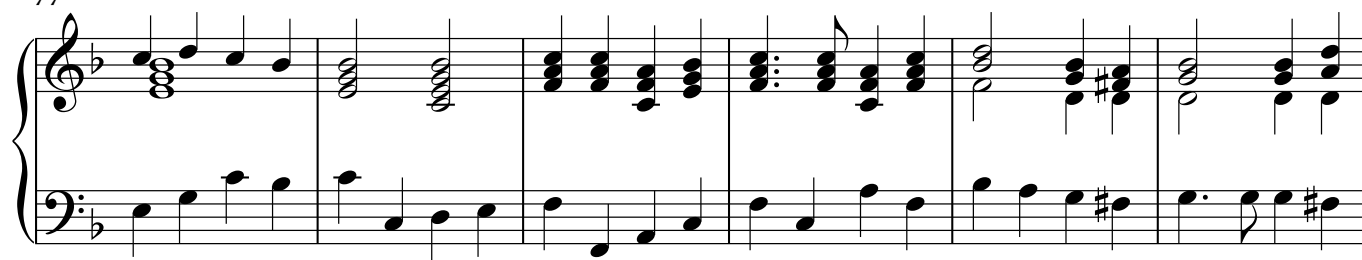
66

Measures 66-70 of a musical score in B-flat major. The right hand continues with a melodic line, and the left hand provides a steady bass line.

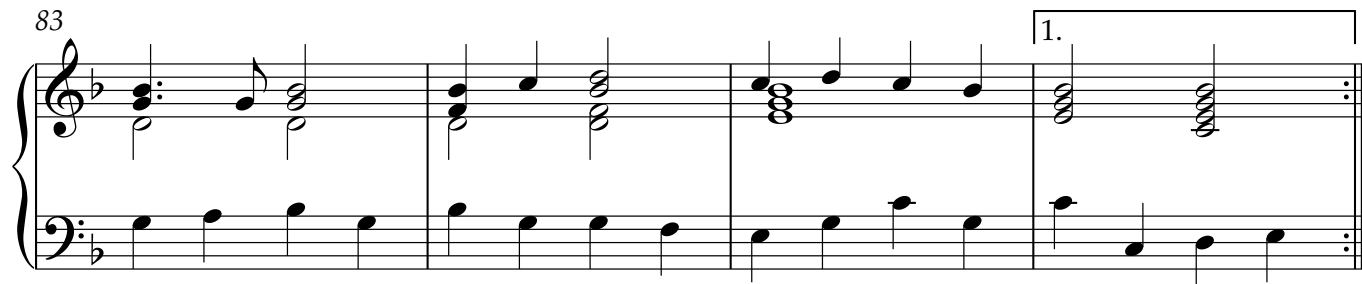
71



77



83



87

