

4-string Bass Guitar

Maša

Gospod Usmili Se

Jaka Jerina

Adagio (♩=60)

6



11



Slava

16 Allegro (♩=120)



20



25



29



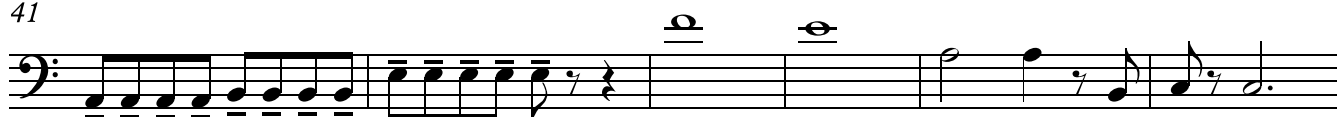
33



37



41



[illegible][illegible][illegible][illegible]

The bass line of 'The Rose Tree' is written on a single staff in bass clef. It begins with a key signature of one sharp (F#). The melody consists of eighth and quarter notes, with some rests. A dynamic marking of *f* (forte) is placed below the staff, with a wedge-shaped hairpin indicating a crescendo leading to it.

[illegible][illegible]

A musical staff in bass clef showing a descending scale from G₂ to C₁. The notes are: G₂, F#₂, E₂, D₂, C₂, B₁, A₁, G₁, F#₁, E₁, D₁, C₁.

A musical staff in bass clef showing the bass line of the song. The melody consists of eighth and quarter notes, ending with a double bar line.

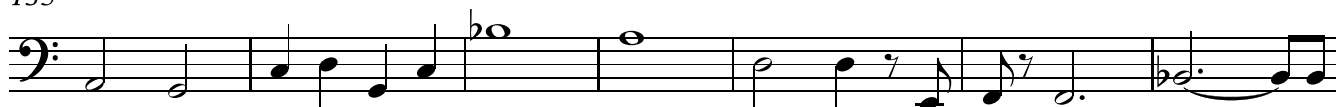
Svet, Blagoslovljen

117 **Moderato**

129



135



142



148



153



Jagnje Božje

158 **Andante** (♩=44)

7



170



176



183



189



195

rit.

