

Jezusu

glasba: Nina Šavli
Aranžma: A. Marinič

A D

D/H

D/C#

J. = 62

Zbor

Violina I

Violina II

Violina III

Viola

Violončelo

Je - zus pri - di, pri - di,

Klavir

A

J. = 62

Bas kitara

Bobni

4

3

C

19 G Em D G D⁷ D A G D Hm⁷ Em

k me - ní, da se u-mi - rim. Če-prav te ne vi - dim vem, da si tu, če-prav te ne sli - šim

The image shows a musical score for a song. It features a single melodic line on a treble clef staff. The key signature has two sharps (F# and C#), and the time signature is 3/4. The score is divided into measures by vertical bar lines. Above the staff, chord symbols are written: G, Em, D, G, D7, D, A, G, D, Hm7, and Em. Below the staff, the lyrics are written in a mix of Latin and Cyrillic script. The lyrics are: 'k me - ní, da se u-mi - rim. Če-prav te ne vi - dim vem, da si tu, če-prav te ne sli - šim'. The score includes various musical notations such as eighth notes, quarter notes, and half notes, as well as rests and dynamic markings like 'dim' (diminuendo). The score is numbered '19' at the beginning and '3' at the top right.

A musical score for the song "The Rose Tree". The score is written for a voice and piano accompaniment. The voice part is in the upper staff, and the piano accompaniment is in the lower staff. The key signature is one sharp (F#), and the time signature is 4/4. The score consists of 16 measures. The first measure is a whole note chord in the piano part. The second measure is a whole note chord in the piano part. The third measure is a whole note chord in the piano part. The fourth measure is a whole note chord in the piano part. The fifth measure is a whole note chord in the piano part. The sixth measure is a whole note chord in the piano part. The seventh measure is a whole note chord in the piano part. The eighth measure is a whole note chord in the piano part. The ninth measure is a whole note chord in the piano part. The tenth measure is a whole note chord in the piano part. The eleventh measure is a whole note chord in the piano part. The twelfth measure is a whole note chord in the piano part. The thirteenth measure is a whole note chord in the piano part. The fourteenth measure is a whole note chord in the piano part. The fifteenth measure is a whole note chord in the piano part. The sixteenth measure is a whole note chord in the piano part.

A single staff of music showing the C major scale. The scale starts on middle C (C4) and ascends to C5. The notes are: C4, D4, E4, F4, G4, A4, B4, C5, B4, A4, G4, F4, E4, D4, C4. The key signature is one sharp (F#), and the time signature is common time (C).

A musical score for the song "The Rose Tree". The score is written for a single melodic line on a five-line staff. The key signature is one flat (B-flat), and the time signature is 4/4. The melody consists of a series of eighth and quarter notes, with some measures containing beamed eighth notes. The lyrics "The Rose Tree" are written below the staff, aligned with the notes. The score is divided into four measures by vertical bar lines. The first measure contains the notes G4, A4, Bb4, and A4. The second measure contains the notes G4, F4, E4, and D4. The third measure contains the notes C4, Bb3, A3, and G3. The fourth measure contains the notes F3, E3, D3, and C3. The score ends with a double bar line and a repeat sign.

28

D

A Dsus⁴ D Hm⁷ Em Em Asus⁴ A

— vem, da mi po - ješ — vem, ker te ču - tim, — vem, ker ver - ja - mem. —

f *mf* *mf* *mf* *mf* *mf*

D

D

Fill (po svoje)

8

[illegible]

This musical score page contains measures 46 through 51. It is written for a piano with a key signature of one sharp (F#) and a 4/4 time signature. The score is organized into two systems. The first system (measures 46-50) features a complex texture with multiple voices. The right hand (treble clef) contains several melodic lines, some with slurs and accents. The left hand (bass clef) provides a harmonic foundation with sustained notes and moving lines. The second system (measures 51-52) continues the musical ideas, with the right hand playing a more active role and the left hand providing accompaniment. The notation includes various musical symbols such as notes, rests, slurs, and accents.

E

54

Je - zus pri - di, pri - di, da sti - snem se k te - bi

E E/D# E/C# E/H A

mf *p* *p* *p* *p*

p

E

E

Fill (po svoje)

4

F

E

F#m

A

da se u - mi - rim.

k me - ni,

F

F

rit.

rit.

4

Violina I

Jezusu

glasba: Nina Šavli
Aranžma: A. Marinčič

♩ = 62

7 **A**

15 **B** **C**

28

35 **D** *f*

43

50

56 **E** *mf*

63

70 **F** *rit.*

Violina II

Jezusu

glasba: Nina Šavli
Aranžma: A. Marinčič

$\text{♩} = 62$

7 **A**

15 **B**

22 **C**

32 **D** *mf*

41

49

56 **E** *p*

63

71 **F** *rit.*

Violina III

Jezusu

glasba: Nina Šavli
Aranžma: A. Marinčič

$\text{♩} = 62$

7 **A**

15 **B**

22 **C**

32 **D**

42

49

56 **E**

66 **F**

72

mf

p

rit.

Viola

Jezusu

glasba: Nina Šavli
Aranžma: A. Marinčič

62 *V*

7 **A** *5* *V* *π* *V*

15 **B** *V*

22 **C** *V* *π* *V* *π* *V* *π* *V* *π* *V* *π*

33 *V* *π* *V* **D** *π* *mf* *π* *V* *π* *V*

43 *π* *V* *π* *V* *π*

53 *V* *π* *V* **E** *π* *p*

62 *π* *V* *π* *V* *π*

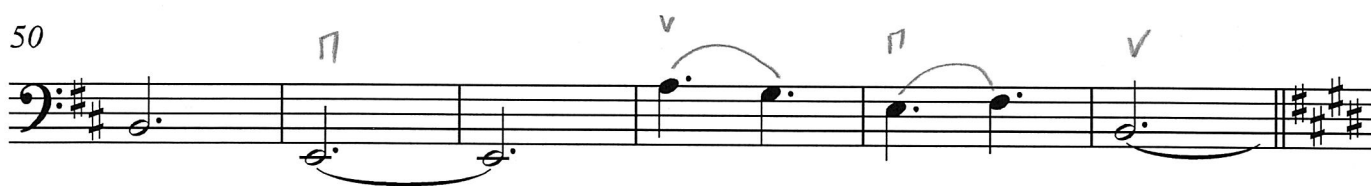
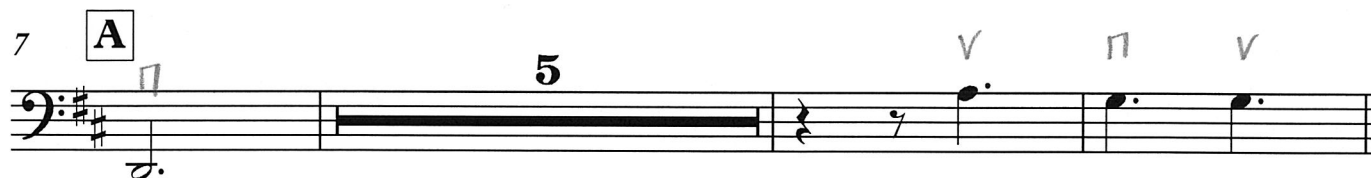
71 **F** *V* *rit.* *π*

Violončelo

Jezusu

glasba: Nina Šavli
Aranžma: A. Marinčič

$\text{♩} = 62$



2

Violoncello

71

F

ff

v

ff

rit.

v

f

