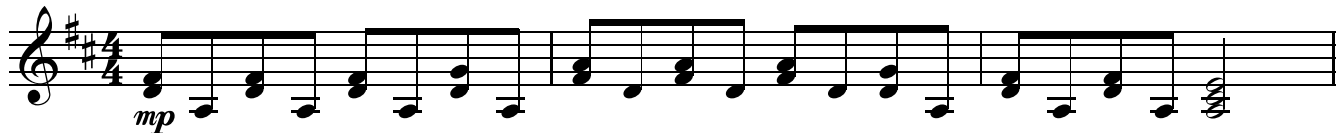


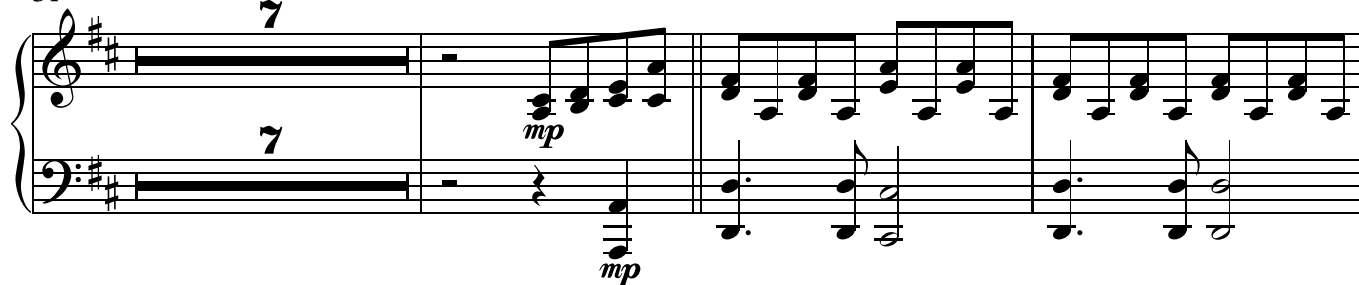
Aleluja

Tadej Horvat

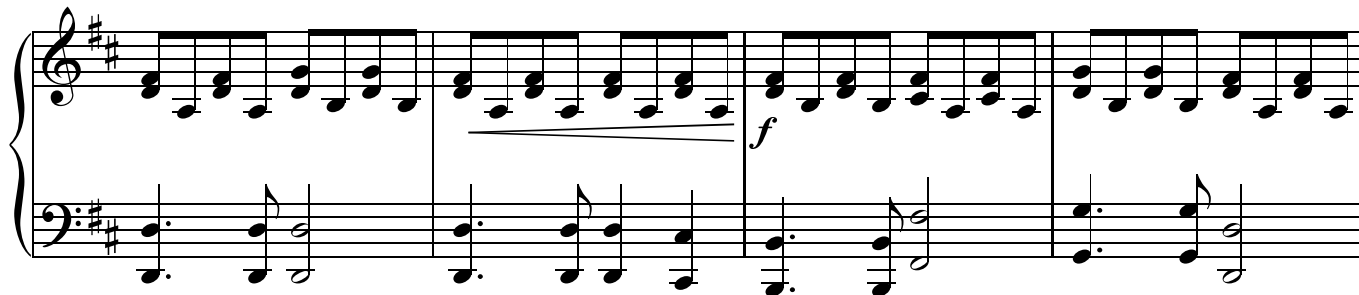
48



51



61



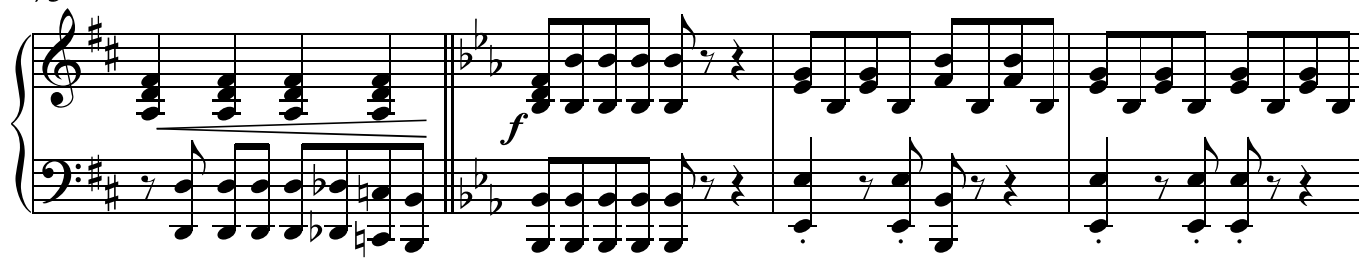
65



70



75



79

Measures 79-82: Treble and bass staves in B-flat major (two flats). The treble staff features a continuous eighth-note accompaniment. The bass staff features a rhythmic pattern of eighth notes and rests, with some notes beamed together.

83

Measures 83-86: Continuation of the musical notation from measures 79-82, maintaining the same key signature and rhythmic patterns.

87

Measures 87-90: Continuation of the musical notation from measures 79-82, maintaining the same key signature and rhythmic patterns.

91

rit.

Measures 91-94: Continuation of the musical notation from measures 79-82. Measure 93 features a whole note chord in both staves, indicated by a large oval. The piece concludes in measure 94 with a double bar line and a key signature change to D major (two sharps).